

# Russell Taylors

E-WARRANTY



SCAN HERE

**USER MANUAL**

**DUST MITE VACUUM**

[www.russelltaylors.co.uk](http://www.russelltaylors.co.uk)

**VM30**



# IMPORTANT SAFEGUARDS

**Please follow the following basic warnings when using this product:**

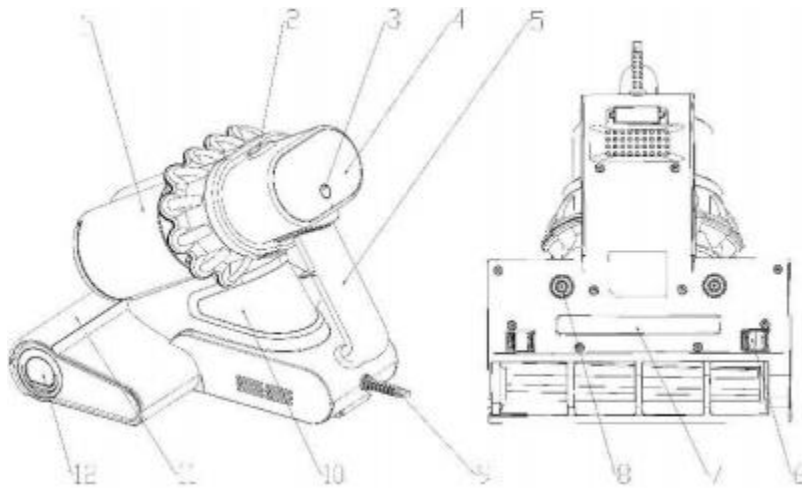
1. This appliance can be used by children aged from 8 years and above and persons with reduced physical, sensory or mental capabilities or lack of experience and knowledge if they have been given supervision or instruction concerning use of the appliance in a safe way and understand the hazards involved. Children shall not play with the appliance. Cleaning and user maintenance shall not be made by children without supervision
2. If the supply cord is damaged, it must be replaced by the manufacturer, its service agent or similarly qualified persons in order to avoid a hazard.
3. Ultraviolet rays can harm the skin and eyes of humans and animals. Do not directly shine on human body, plants or animals.
4. The object to be irradiated and sterilized is first tested locally to avoid damage to light sensitive or non-UV resistant substances.
5. Please do not deliberately destroy the roller at the bottom of the vacuum (safety switch) so that the UV lamp loses protection.
6. Unplug when not in use or before maintenance.
7. To reduce the risk of shock, do not use outdoors or on wet surfaces.
8. Please follow this instruction manual. Use only as per the functions recommended in this manual.
9. When the plug or power cord is damaged. Do not use it.
10. This product is intended for general household use, please do not use for commercial or other purposes. Commercial use will result in a void of warranty.
11. Do not suck glass pieces, screws and other sharp hard objects, as well as construction waste, to avoid damage to the machine.
12. Do not place the machine on a hot surface.
13. Do not use when the air duct is blocked. Otherwise, the motor will be damaged.
14. Do not use when dust cup or filter is not installed. Otherwise, the motor will be damaged.

## **Product Warranty**

- This appliance has been designed for domestic dry vacuum cleaning only. Any evidence of commercial use will result in void of warranty.
- The vacuum cleaner is backed by a 2-year manufacturing warranty (The battery pack is covered by a 6-month warranty).

**Special note:**

Some special groups are not suitable for using this product, such as children, disabled people, people with mental illness. Unless they are using the product under supervision to ensure safety. Please ensure that children do not use this product as a toy.



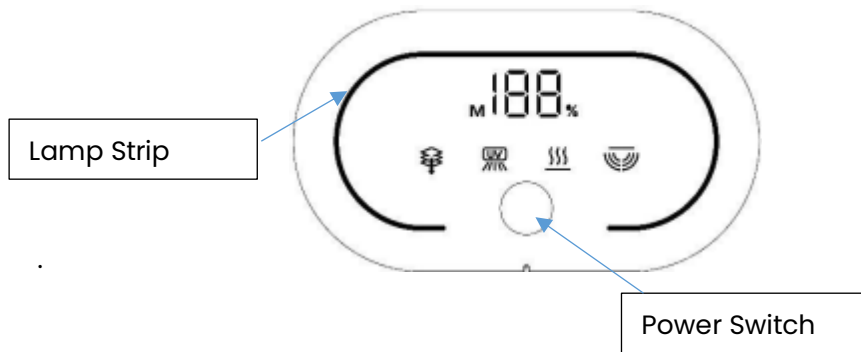
1. Dust cup
2. Dust cup release button
3. Power switch
4. Functional display
5. Handle
- 6 UV protection switch
7. UV light window
8. Ultrasonic pore
9. Power cord
10. Main machine
11. Roll brush window
12. Rolling brush

## MAIN MACHINE OPERATION

1. Plug the power cord into the socket and switch on the power supply. Gently press the power supply in the display area of the screen to enter the automatic mode. When the machine is put on the working surface (bed sheet, quilt), the UV light and ultrasonic vibration pads will turn on.

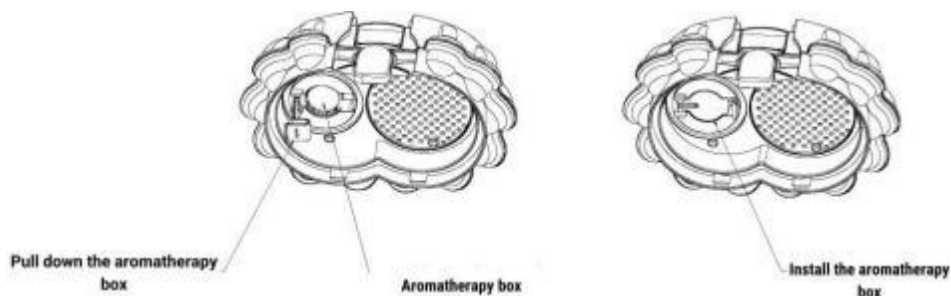
In normal operation, through the dust mite intelligent sensor, the color band display will change based on the volume of dust being taken in by the vacuum cleaner. When the air intake sensor detects the increase of dust mite quantity in the air intake, the blue light band display will change from left to right from blue to

red (full red at most). At the same time, motor speed increases and the data display will also increase synchronously (maximum 100). When the amount of dust mites in the air intake decreases, the blue display is increased synchronously, and the motor data decreases. When the vacuum is running, press the power switch again, the vacuum will enter full speed, press the power switch for the third time to turn it off



2. Place the machine on the item to be cleaned (such as a mattress), and slowly push and pull the machine back and forth for cleaning. (Recommended cleaning speed is less than 20 seconds per meter, back and forth three times).

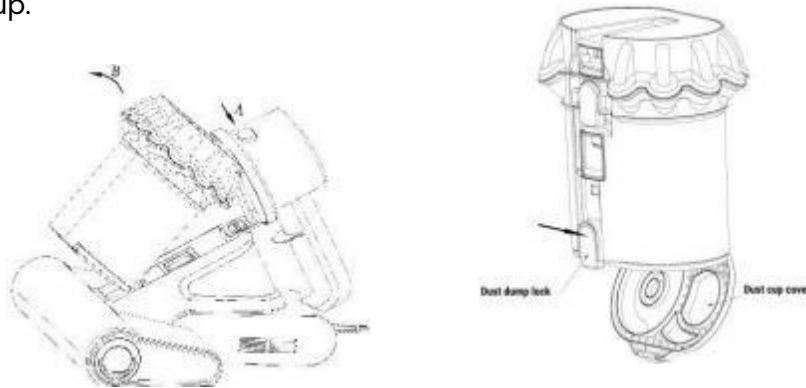
3. The inside of the dust cup cover is equipped with an aromatherapy tablet installation box. Users can choose the aromatherapy tablets of the same specifications, which can keep the indoor environment with fresh fragrance after use. After separating the dust cup upper cover assembly from the dust cup assembly according to the cleaning and maintenance method, pull up the aroma covers as shown in the figure, put the aroma piece (diameter assembly on the dust cup and place it in the position of the main engine).



**Note:** This machine is equipped with 2-point protection and anti-tipping function. The machine stops UV sterilization and ultrasonic mite removal function when its lifted too high. When using, please adjust the height between the machine and the contact surface to ensure the normal operation of the machine. If the UV lamp is raised too high and the ultrasonic function does not work, it is a normal reaction. The wheels on the base of the vacuum must be engaged for the UV lamp and ultrasonic function to work.

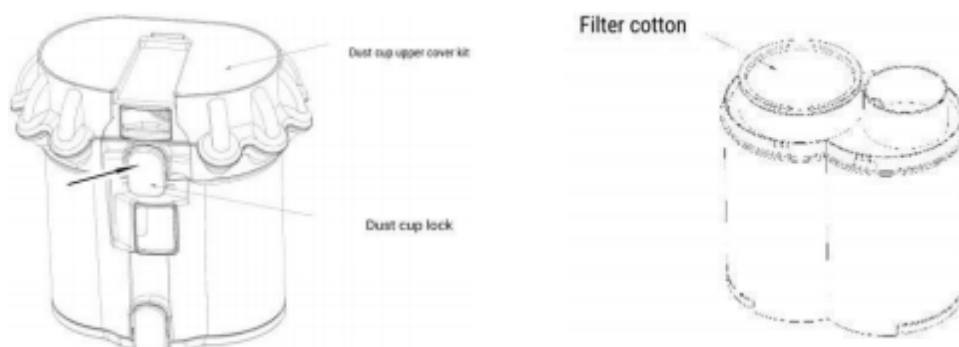
Clean the dust cup assembly and brush assembly regularly. Because the mites in the adsorbed cotton may not be killed and will continue to reproduce, in order to avoid secondary pollution, it is necessary to pour out the dirt collected in time, clean the dust cup assembly and the rolling brush assembly, and replace the new fine filter cotton when the high efficiency filter cotton is damaged. Here's how:

1. Turn off the machine and remove the power plug
2. Press A as shown below to press the release button of the dust cup, cover the dust cup and rotate according to Figure B, lift the dust cup, and remove the dust cup.



3. One-button Dust Pouring: Hold the dust cup and press the lock button of the bottom cover of the dust cup in the direction of the figure. The bottom cover of the dust cup will open automatically and the dust will be poured out

4. Clean and replace the fine filter cotton. Press the dust cup lock button according to the image below, remove the dust cup cover assembly, and then remove the fine filter cotton according to the image. Wash with water, dry it, put it back, and close the cover again.



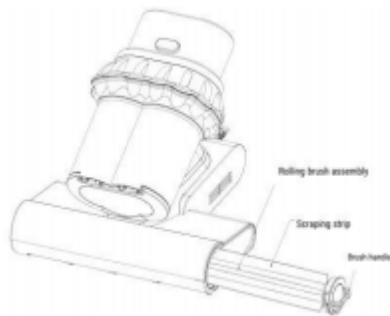
5. Clean the inner parts of the dust cup: after removing the upper cover assembly, Remove the parts shown one by one and clean them with water until they are fully cleaned and reinstall after drying.



6. After the dust cup parts are reinstalled in place, install the upper cover assembly. Cover the top as shown. After the two buckle positions of the component are aligned with the installation slot on the dust cup, properly clamp into the dust cup. Press the opposite position step by step, when all in place, the dust cup lock button to close the lid.



7. **Cleaning roller brush components:** Open the small handle at the end of the rolling brush assembly according to the drawing below and pull it out. After holding the handle, rinse the rolling brush with clean water and dry.



**Loading method:** Push the brush rolling component inward through the mounting hole of the shell.

When a crisp sound is generated, the brush rolling component has slipped into the installation position. At this time, the end is aligned with the casing and installed in place.

## CLEANING AND MAINTENANCE

1. All routine care and maintenance work must be done after the vacuum cleaner is unplugged.
2. Often clean the garbage in the dust container to avoid the failure of the dust mite vacuum.
3. Bundle the power cord and put it away together with the machine.
4. Keep the storage area dry.
5. Heavy objects should not be stacked above the machine.